

# lush ×

w a l l

**SIZE** | 160mm x 15mm x 2900mm

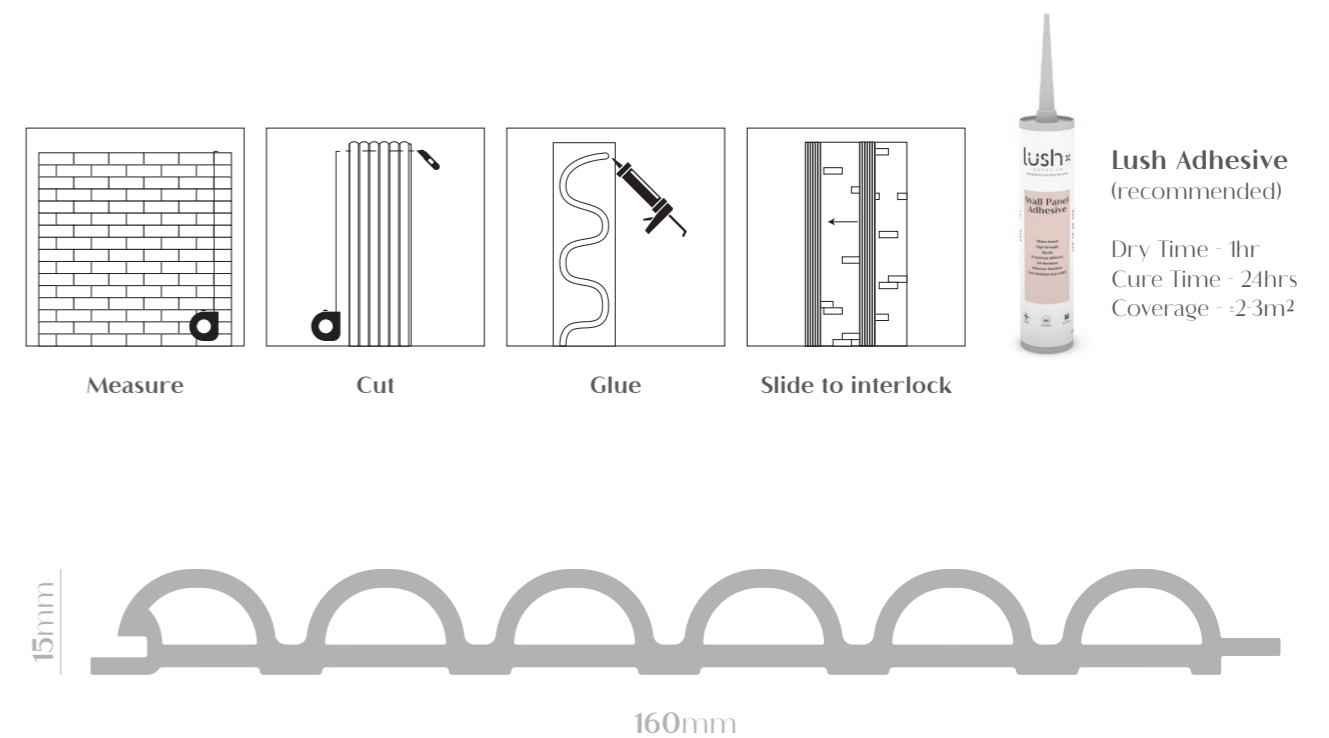
#### BENEFITS

- Seamless interlocking design
- Termite proof
- Fire resistant
- Water resistant
- High Strength
- Eco Friendly
- Low maintainance
- Easy installation (interlocking)
- Highest quality for indoor wall use
- Material - Wood Plastic Composite
- Surface - Lamination

#### INSTALLATION

1. Ensure that the application surface is dust and grime free and any wallpaper is removed.
2. Measure the application area and cut the panels to size using a blade or circular saw.
3. Apply the recommended Lush Adhesive in an even layer to the back of the panel.
4. Press the panel firmly against the wall (can also be secured using a nail gun).
5. Panels can be installed horizontally or vertically
6. Combine two grooved edges for corner finish.
7. Allow to dry.

**NB! KEEP OUT OF DIRECT SUNLIGHT. KEEP IN AREAS BELOW 30 DEGREES CELSIUS.**



 MODEL D

- MVG1447 -  
MODEL D | P E C A N N U T



- MVG1448 -  
MODEL D | H A Z E L N U T

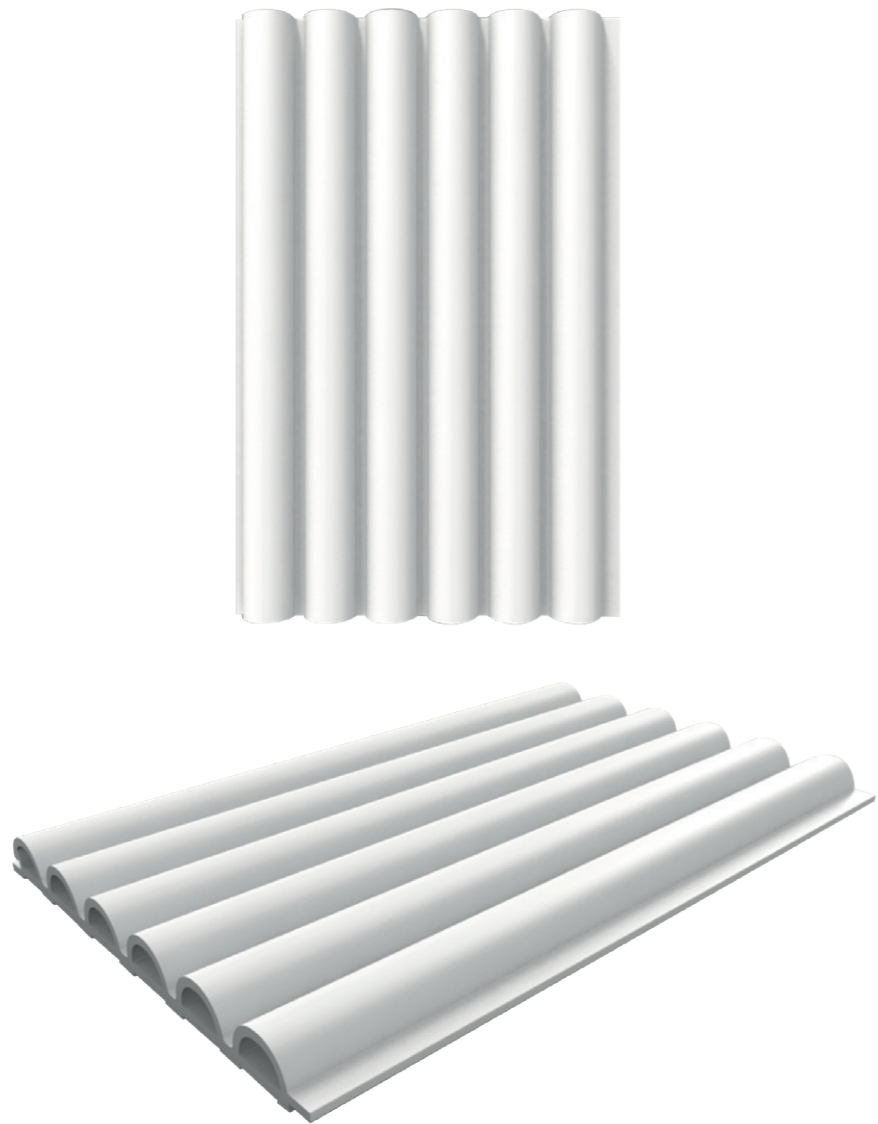


 MODEL D

- MVG1449 -  
MODEL D | WALNUT

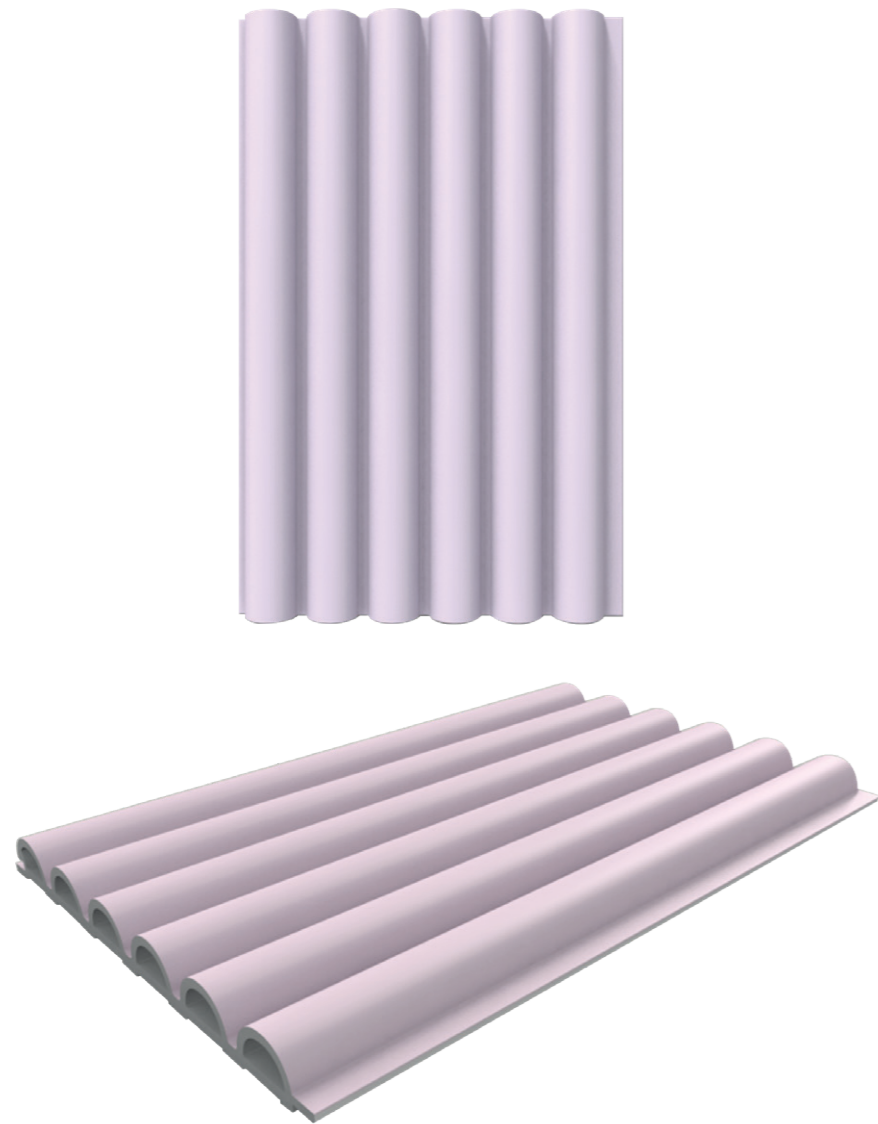


- MVG1450 -  
MODEL D | B I A N C O

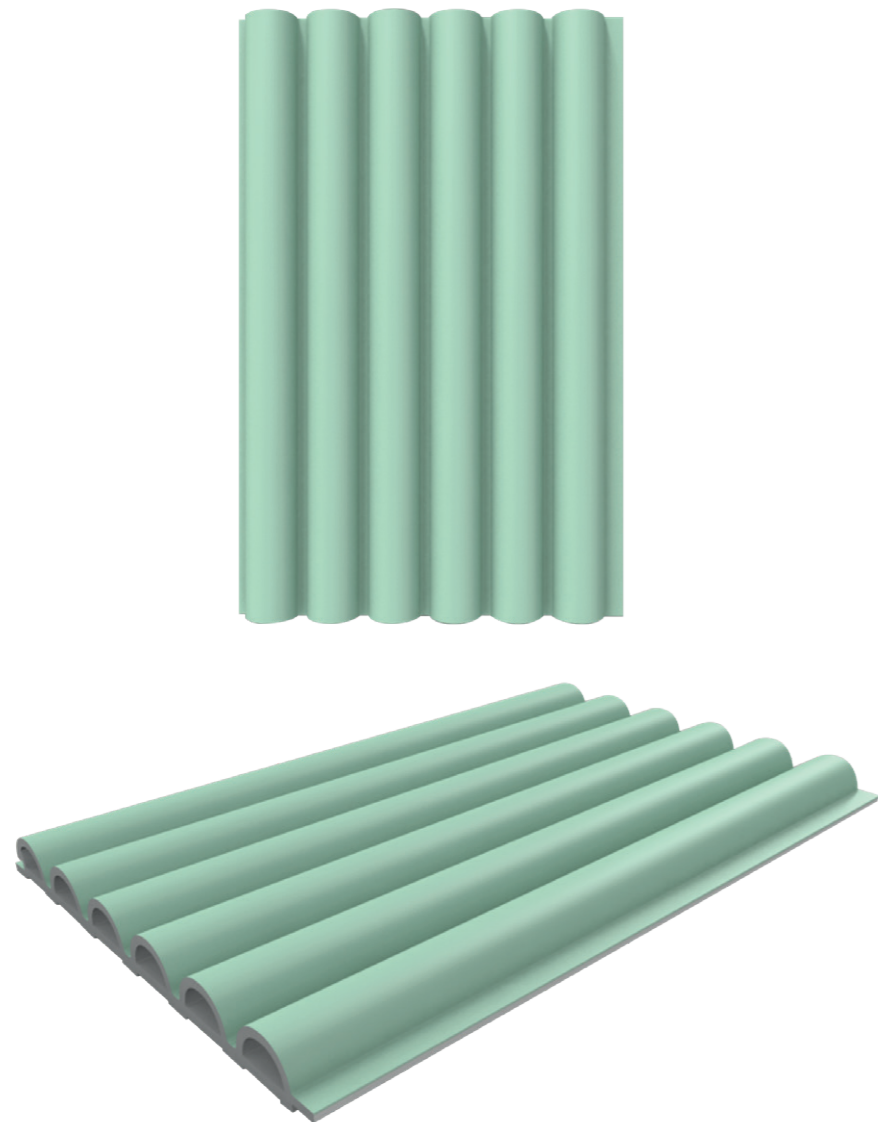


 MODEL D

- MVG1451 -  
MODEL D | L E M O N A D E



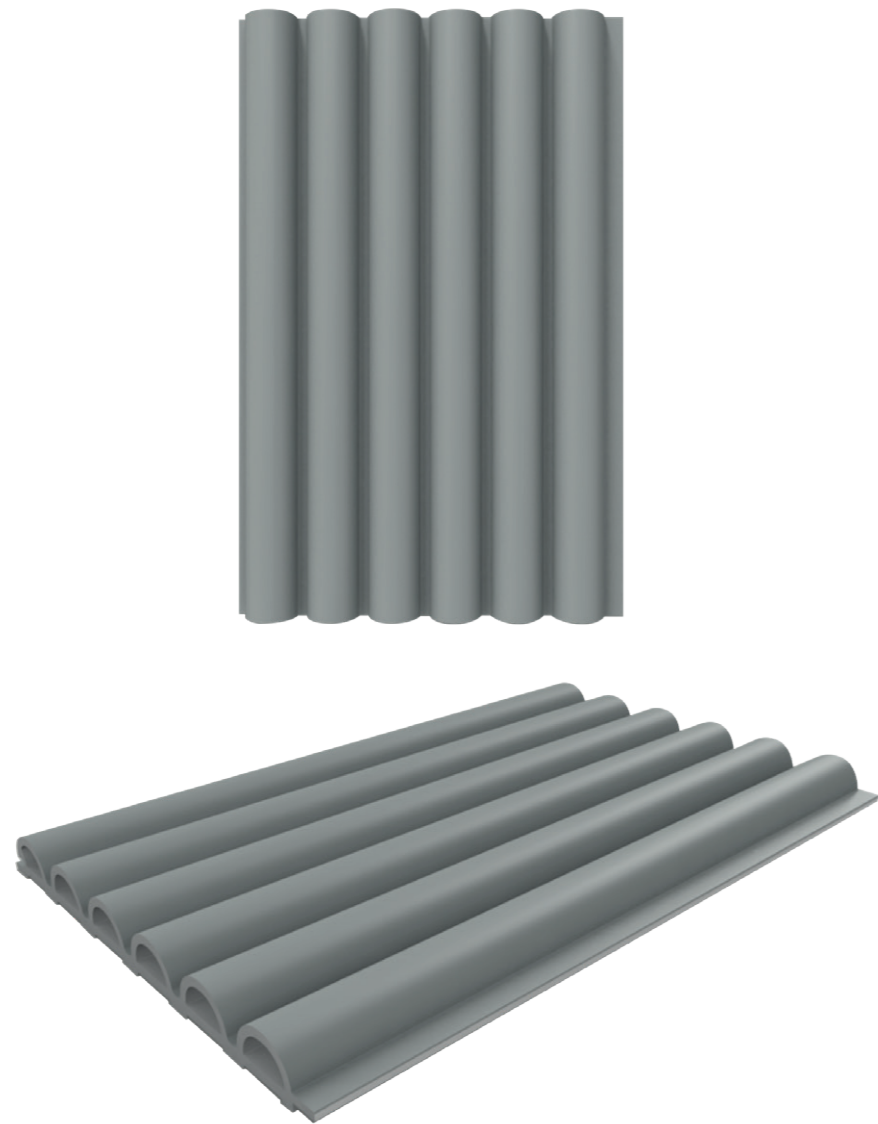
- MVG1452 -  
MODEL D | M I N T





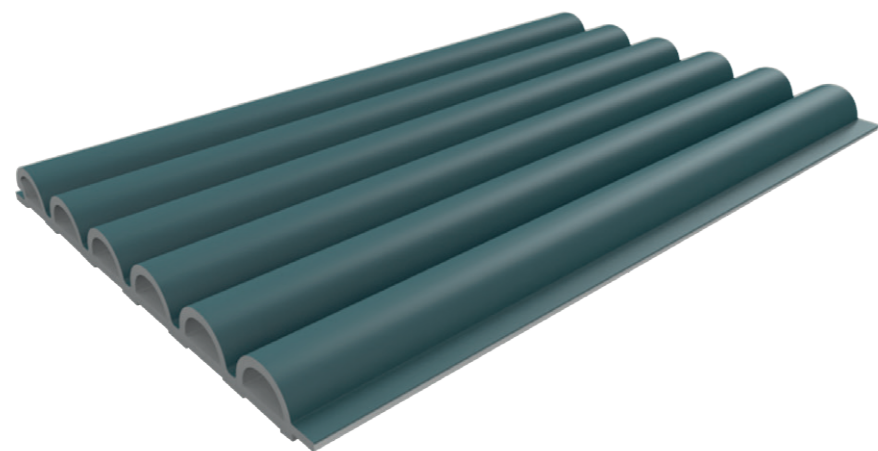
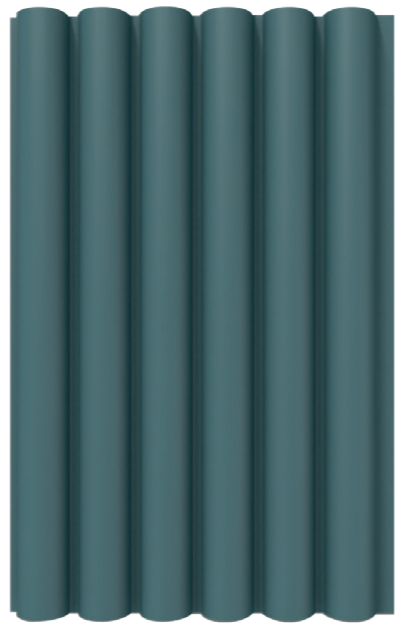
MODEL D

- MVG1453 -  
MODEL D | S L A T E



- MVG1454 -

MODEL D | P E A C O C K

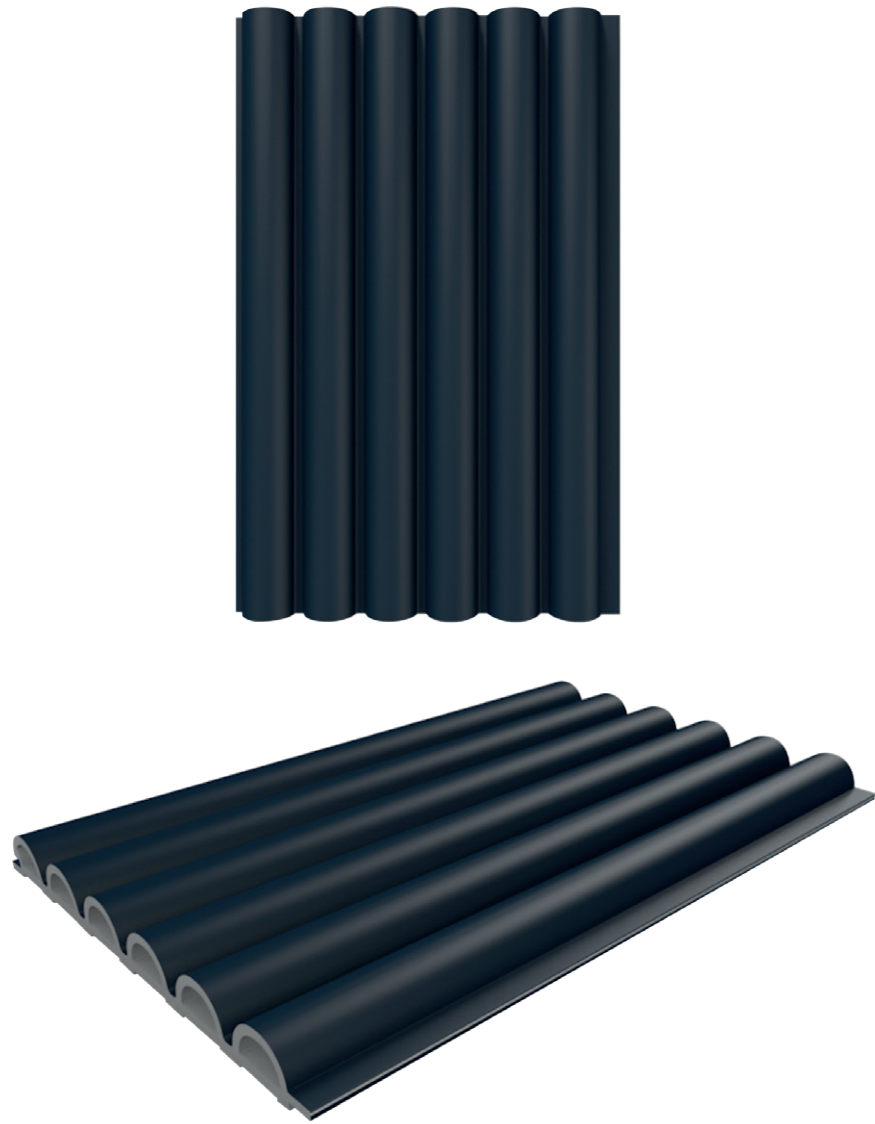


- MVG1455 -  
MODEL D | F E R N



MODEL D

- MVG1456 -  
MODEL D | M I D N I G H T B L U E



- MVG1457 -  
MODEL D | N E R O



SIZE | 159mm x 23mm x 2900mm

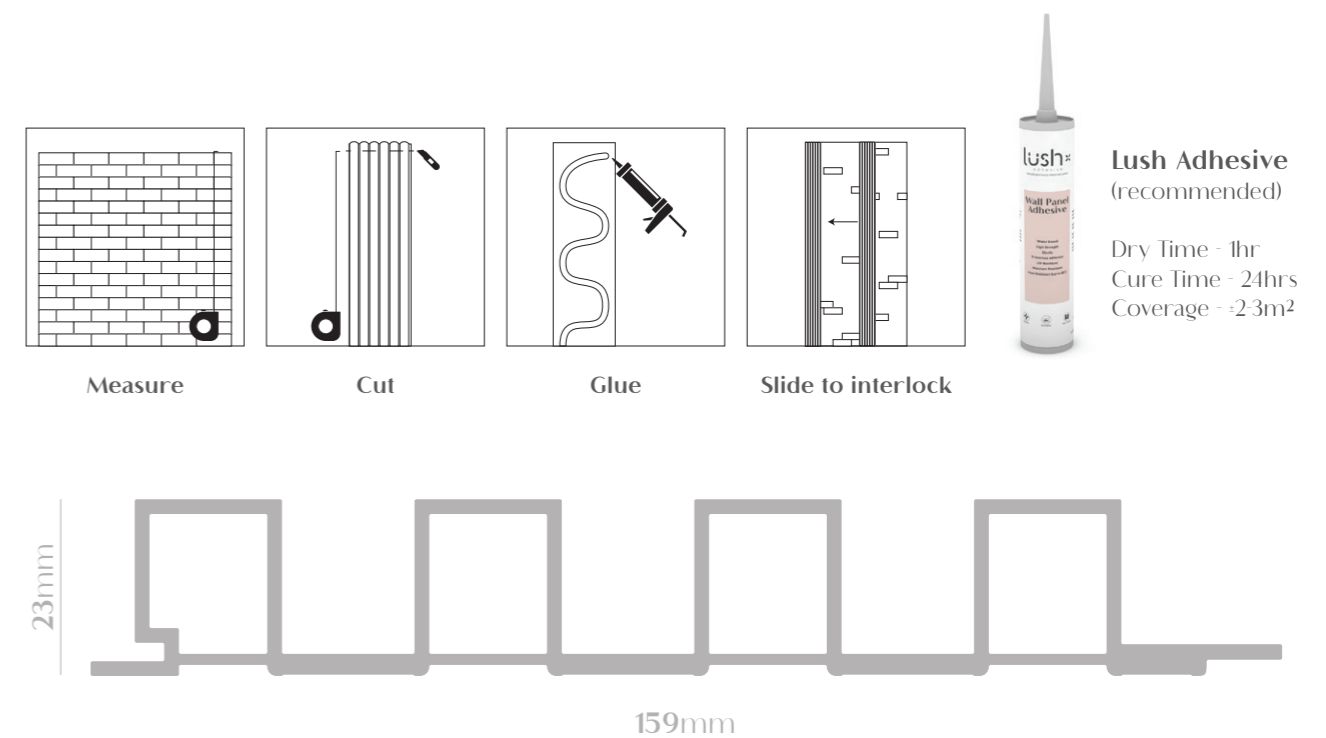
**BENEFITS**

- Seamless interlocking design
- Termite proof
- Fire resistant
- Water resistant
- High Strength
- Eco Friendly
- Low maintainance
- Easy installation (interlocking)
- Highest quality for indoor wall use
- Material - Wood Plastic Composite
- Surface - Lamination

**INSTALLATION**

1. Ensure that the application surface is dust and grime free and any wallpaper is removed.
2. Measure the application area and cut the panels to size using a blade or circular saw.
3. Apply the recommended Lush Adhesive in an even layer to the back of the panel.
4. Press the panel firmly against the wall (can also be secured using a nail gun).
5. Panels can be installed horizontally or vertically
6. Combine two grooved edges for corner finish.
7. Allow to dry.

**NB! KEEP OUT OF DIRECT SUNLIGHT. KEEP IN AREAS BELOW 30 DEGREES CELSIUS.**



- MVG1458 -  
MODEL U | P E C A N N U T



- MVG1459 -  
MODEL U | H A Z E L N U T





- MVG1460 -  
MODEL U | C O C O N U T



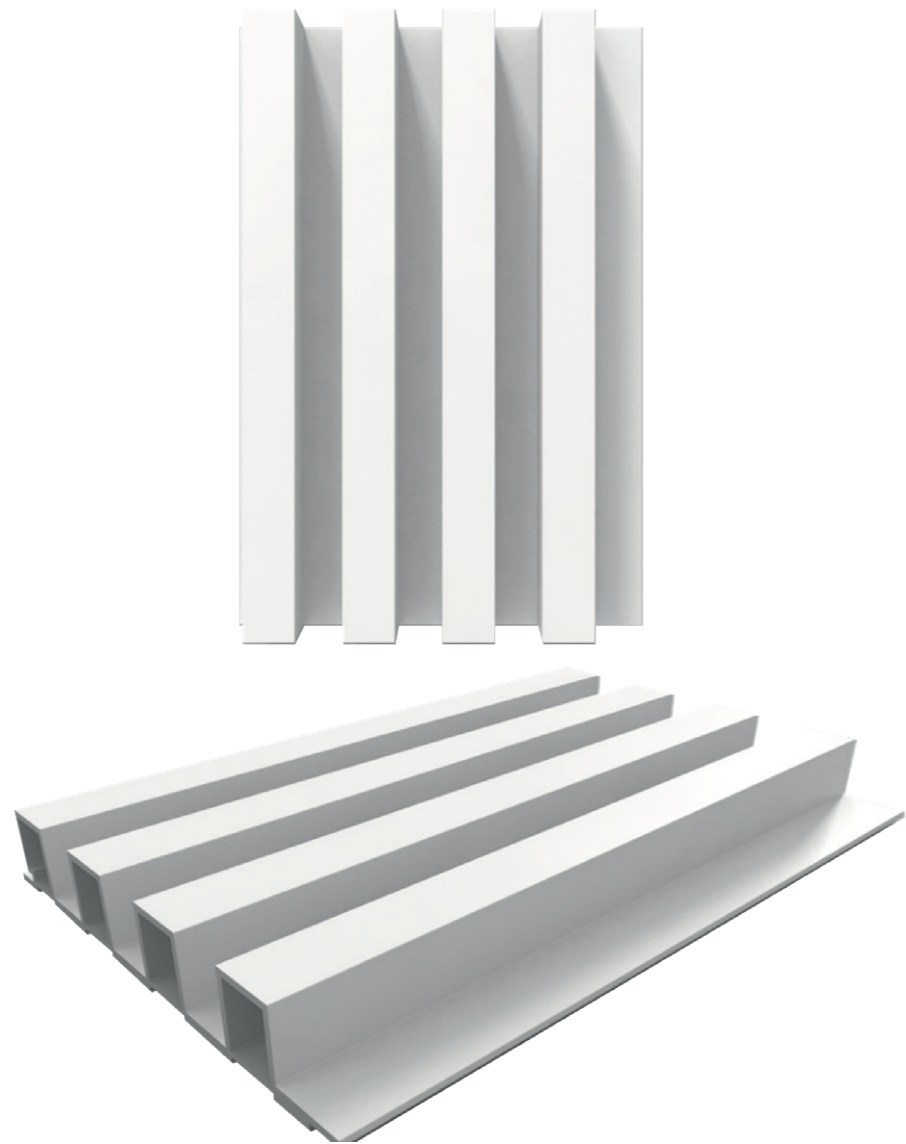
- MVG1461 -  
MODEL U | WALNUT



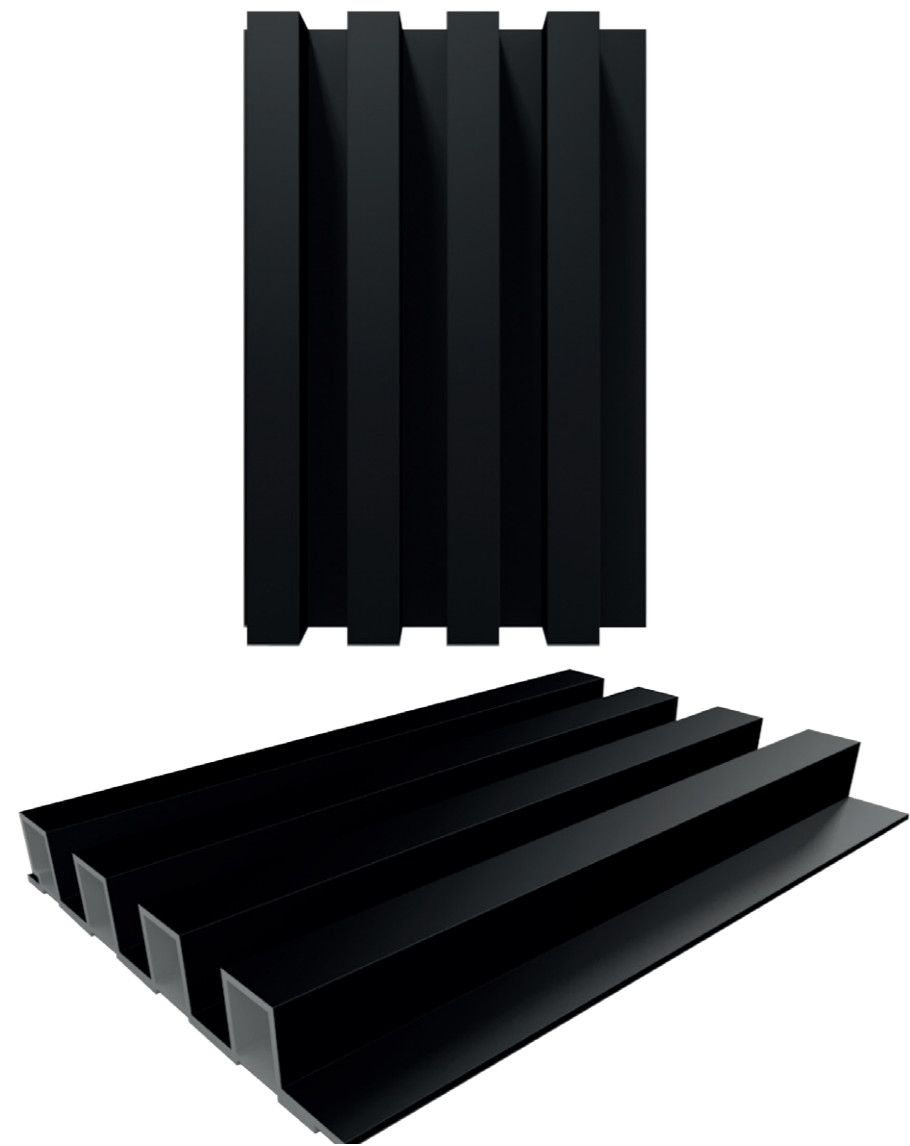
- MVG1462 -  
MODEL U | CHESTNUT



- MVG1463 -  
MODEL U | B L A N C O



- MVG1464 -  
MODEL U | N E R O



**SIZE** | 155mm x 8mm x 2380mm

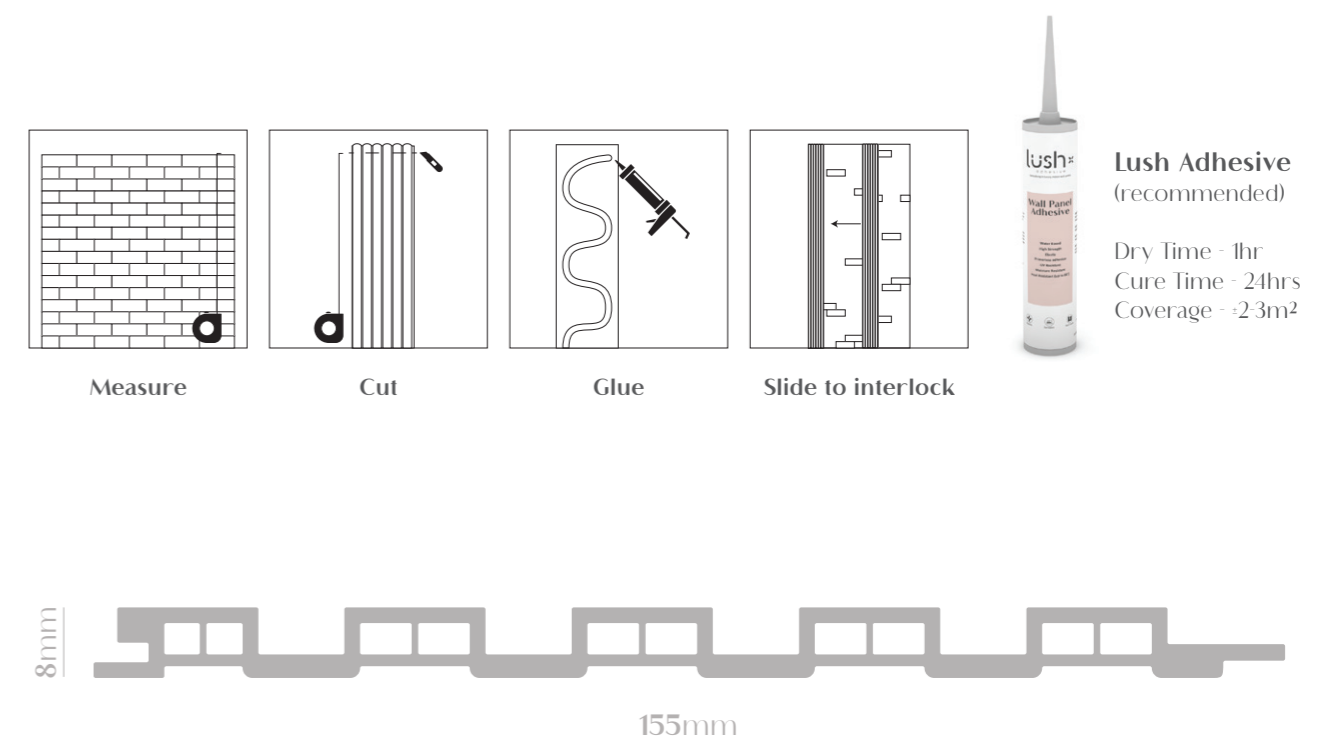
#### BENEFITS

- Seamless interlocking design
- Termite proof
- Fire resistant
- Water resistant
- High Strength
- Eco Friendly
- Low maintainance
- Easy installation (interlocking)
- Highest quality for indoor wall use
- Material - Wood Plastic Composite
- Surface - Lamination

#### INSTALLATION

1. Ensure that the application surface is dust and grime free and any wallpaper is removed.
2. Measure the application area and cut the panels to size using a blade or circular saw.
3. Apply the recommended Lush Adhesive in an even layer to the back of the panel.
4. Press the panel firmly against the wall (can also be secured using a nail gun).
5. Panels can be installed horizontally or vertically
6. Combine two grooved edges for corner finish.
7. Allow to dry.

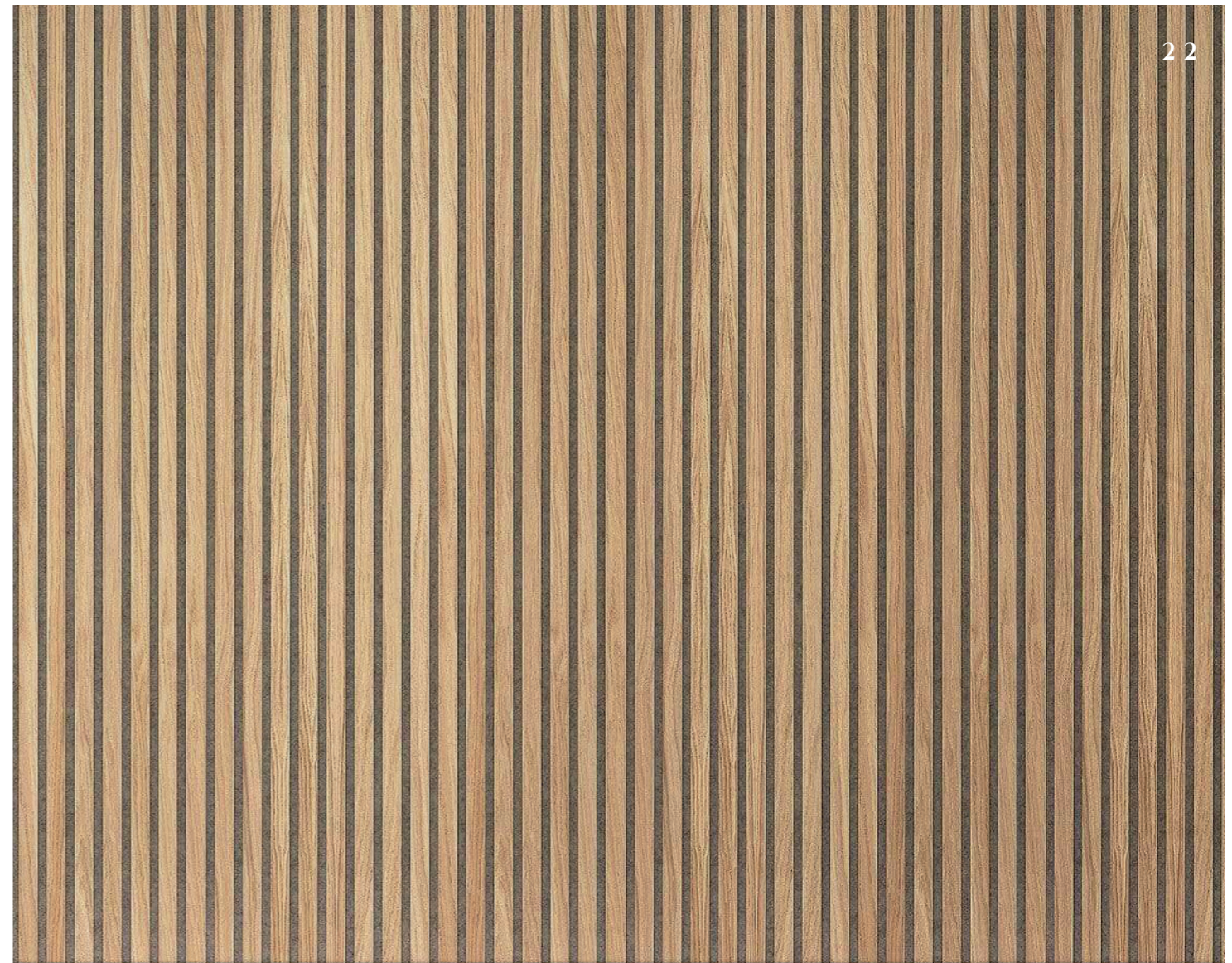
**NB! KEEP OUT OF DIRECT SUNLIGHT. KEEP IN AREAS BELOW 30 DEGREES CELSIUS.**





MODEL H

- MVG1507 -  
MODEL H | P I N E

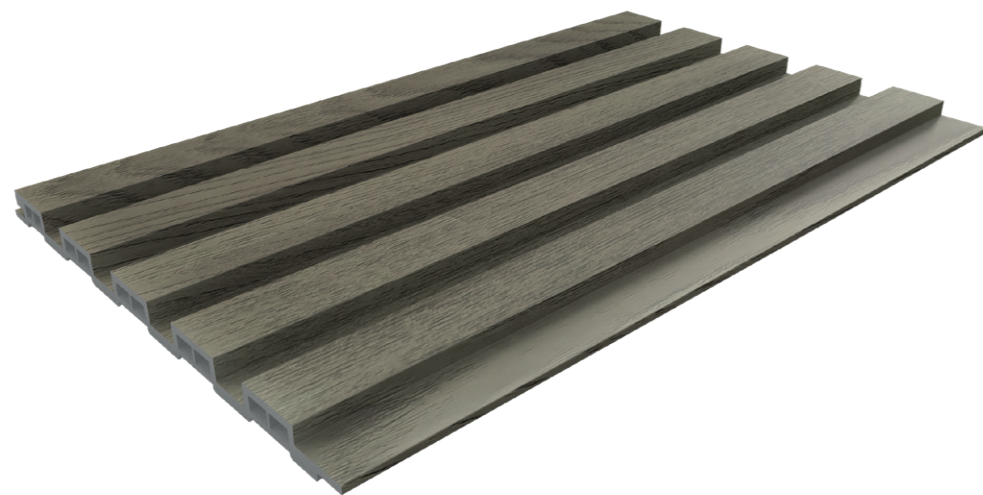




MODEL H

- MVG1508 -

MODEL H | B I R C H





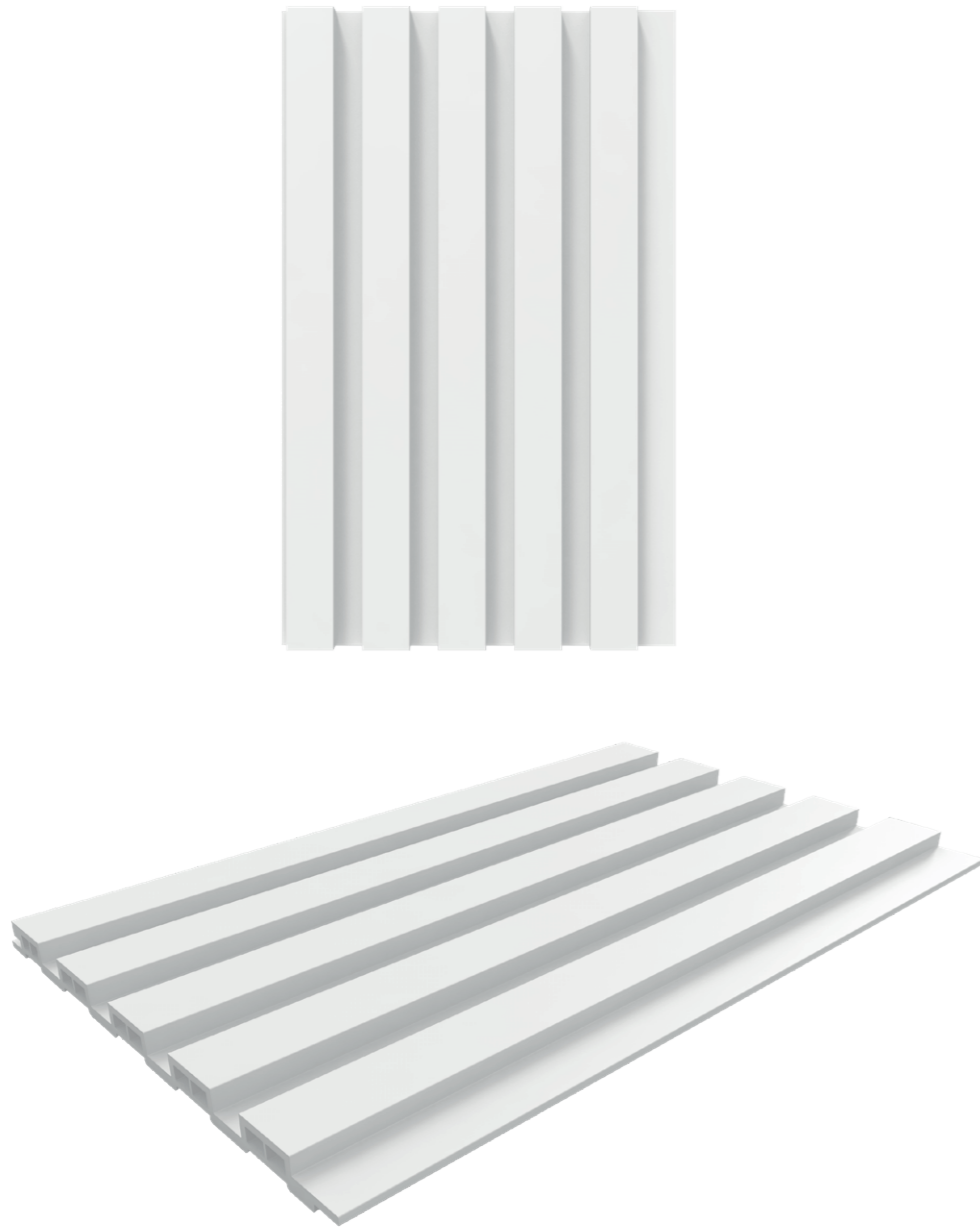
- MVG1509 -  
MODEL H | HICKORY



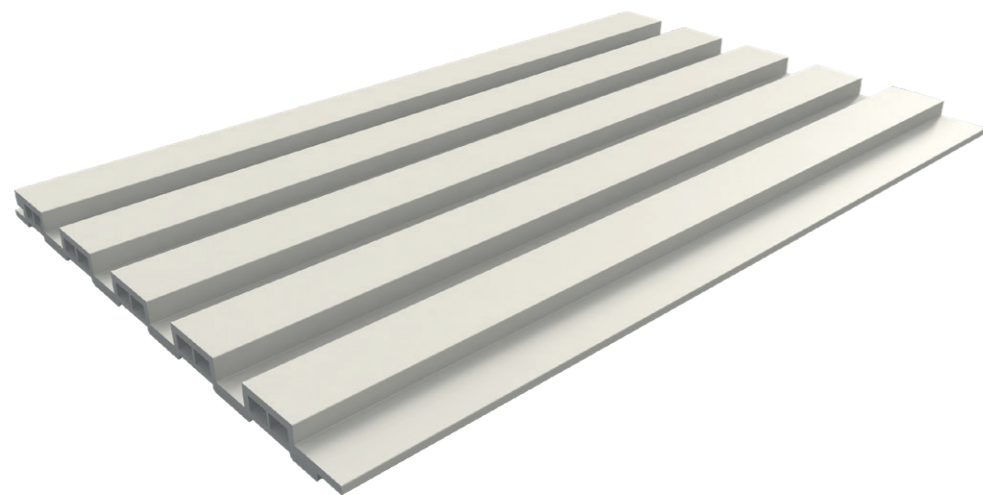
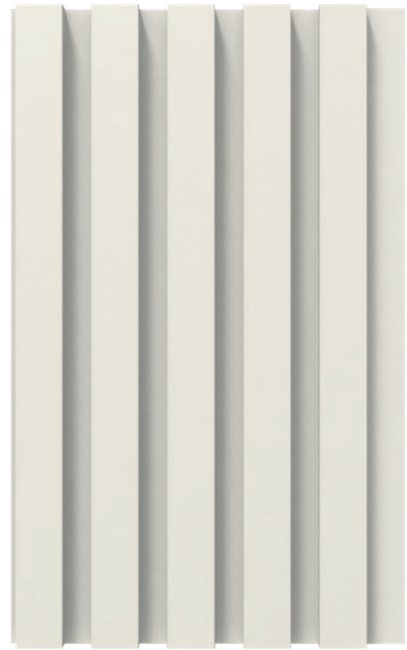
- MVG1510 -  
MODEL H | W E N G U E



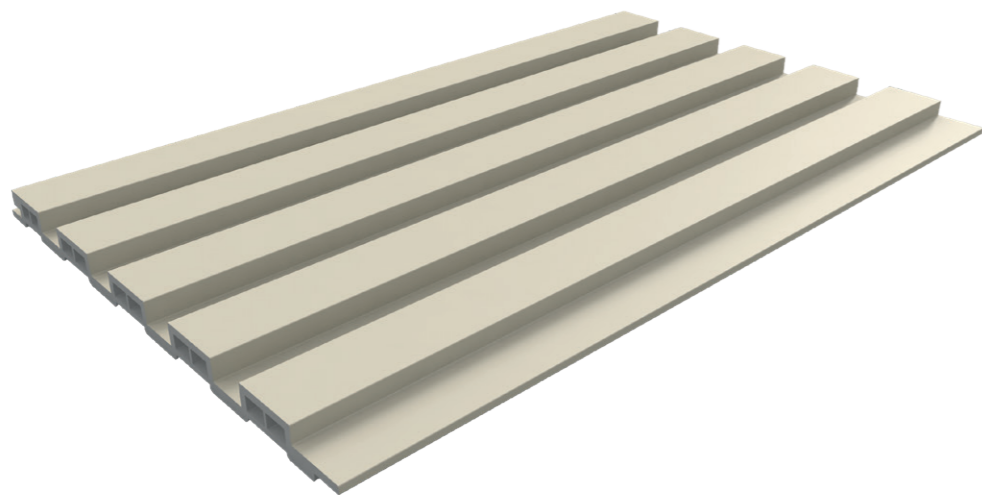
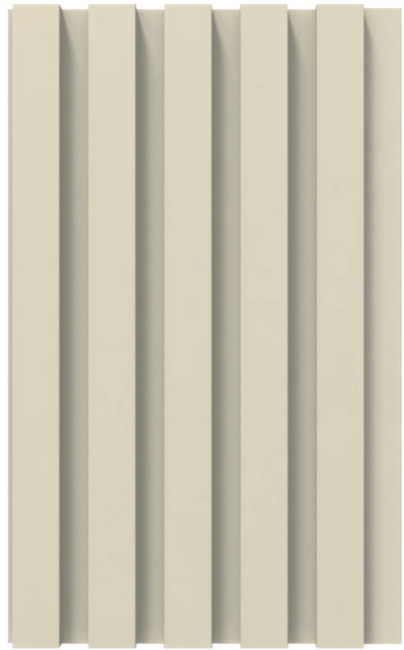
- MVG1513 -  
MODEL H | P E W E R



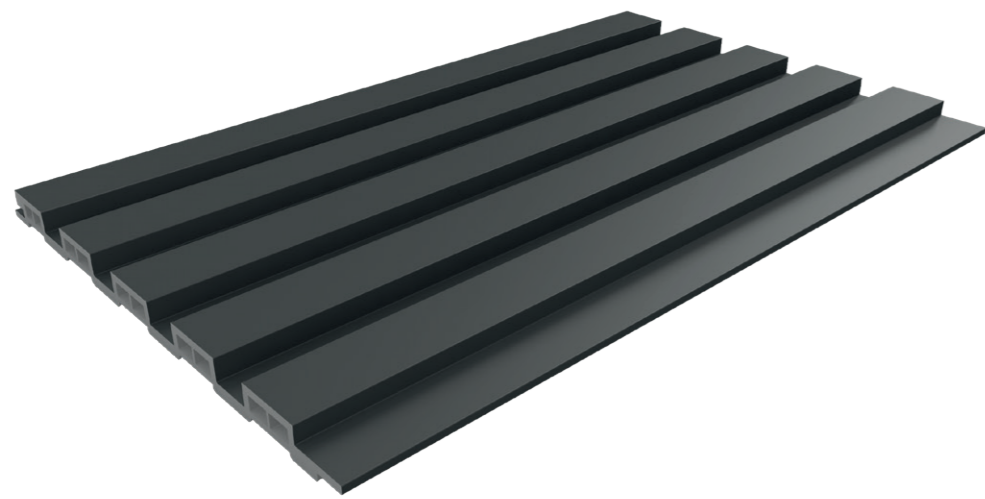
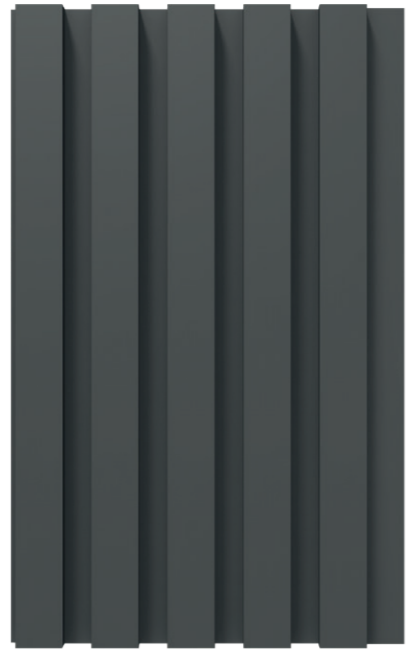
- MVG1511 -  
MODEL H | I V O R Y



- MVG1512 -  
MODEL H | EGG SHELL



- MVG1514 -  
MODEL H | S H A D O W



**SIZE** | 160mm x 11mm x 2900mm

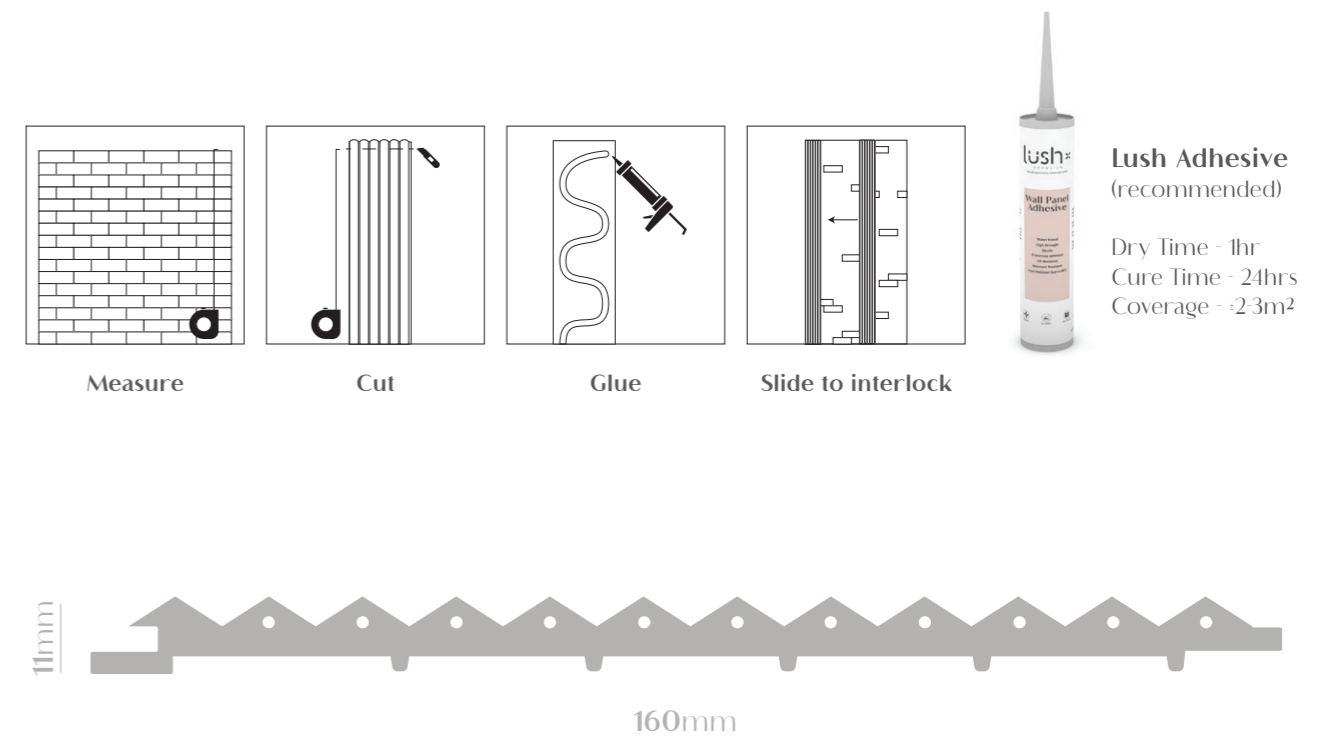
#### BENEFITS

- Seamless interlocking design
- Termite proof
- Fire resistant
- Water resistant
- High Strength
- Eco Friendly
- Low maintainance
- Easy installation (interlocking)
- Highest quality for indoor wall use
- Material - Wood Plastic Composite
- Surface - Lamination

#### INSTALLATION

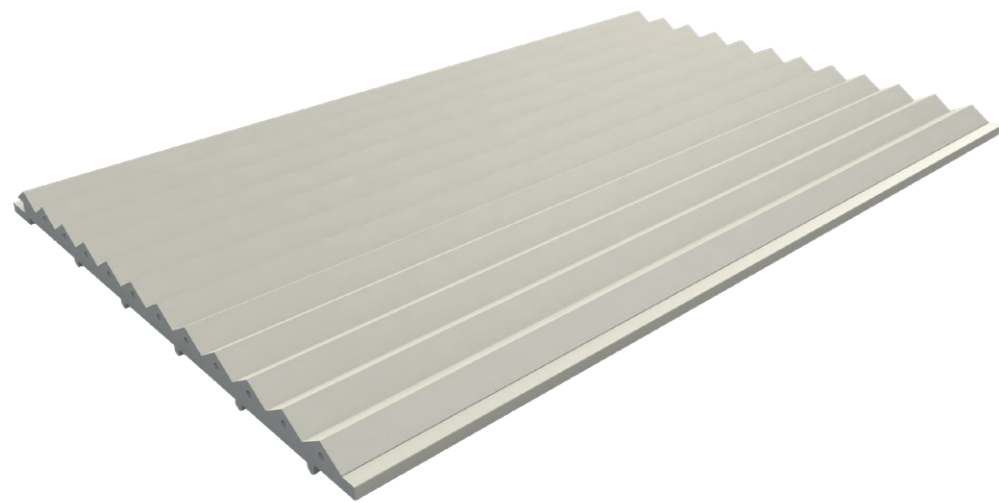
1. Ensure that the application surface is dust and grime free and any wallpaper is removed.
2. Measure the application area and cut the panels to size using a blade or circular saw.
3. Apply the recommended Lush Adhesive in an even layer to the back of the panel.
4. Press the panel firmly against the wall (can also be secured using a nail gun).
5. Panels can be installed horizontally or vertically
6. Combine two grooved edges for corner finish.
7. Allow to dry.

**NB! KEEP OUT OF DIRECT SUNLIGHT. KEEP IN AREAS BELOW 30 DEGREES CELSIUS.**



 MODEL W

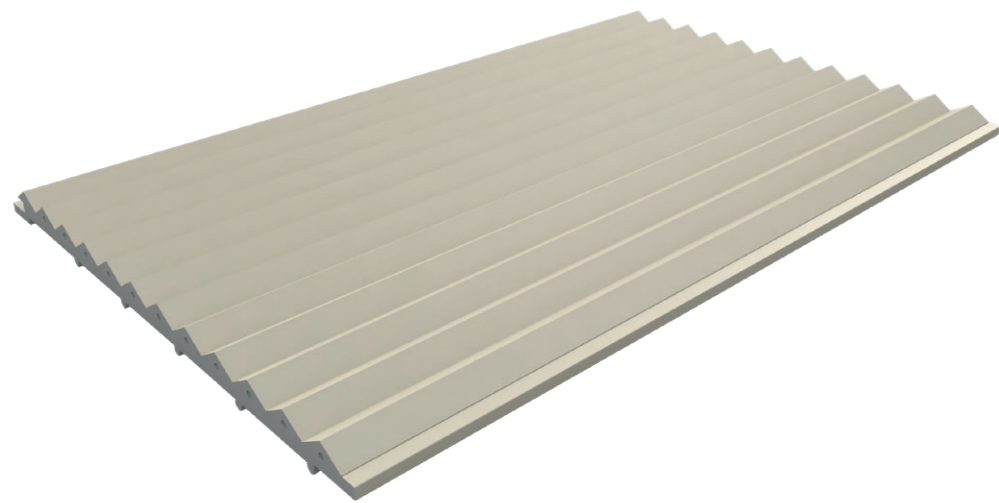
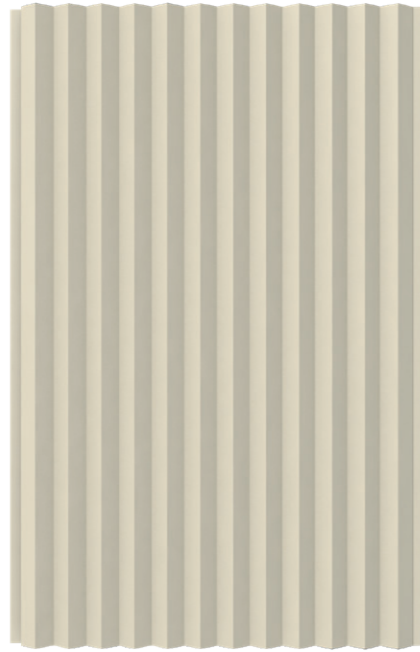
- M V G 1 5 1 5 -  
MODEL W | W A R M    W H I T E



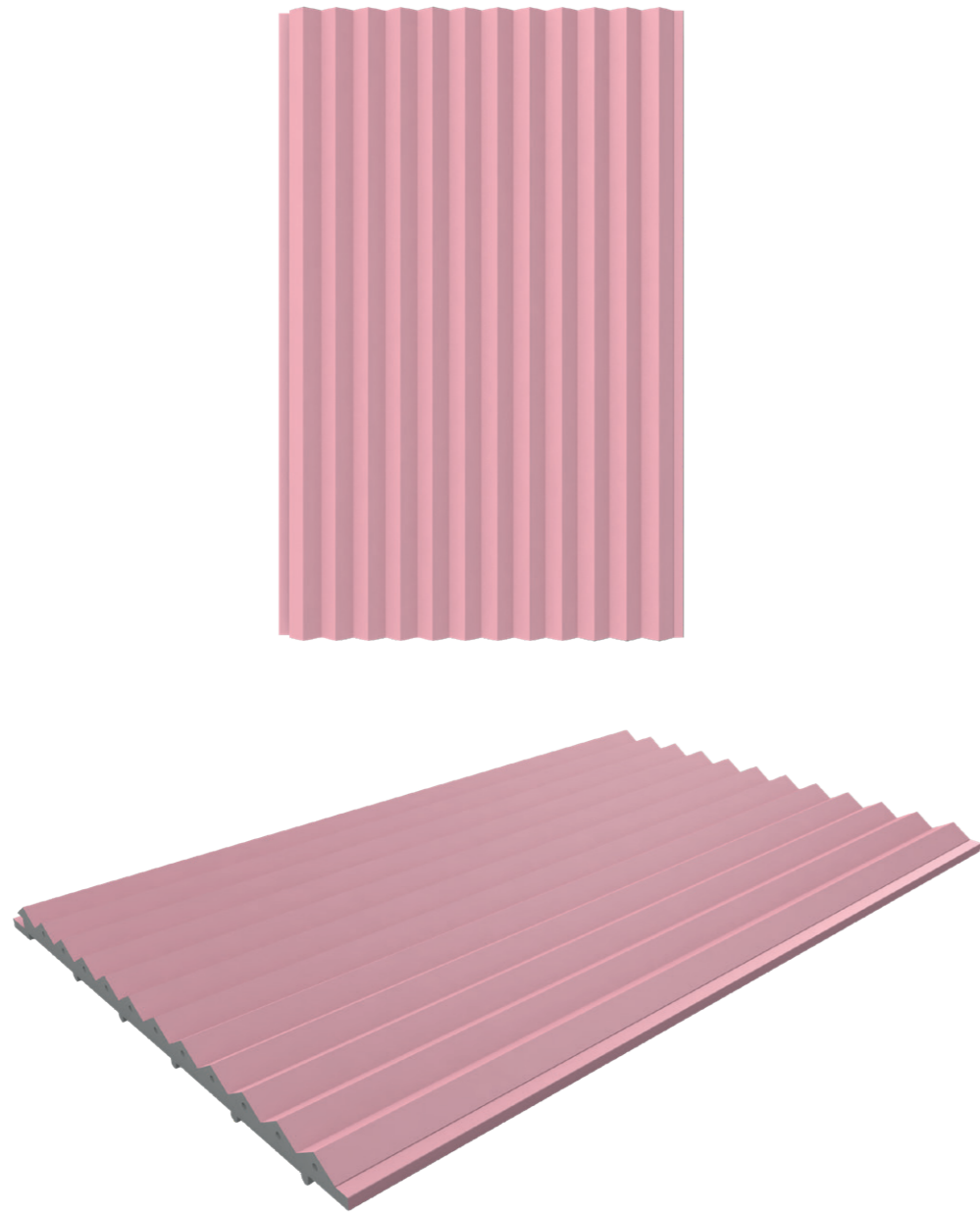


MODEL W

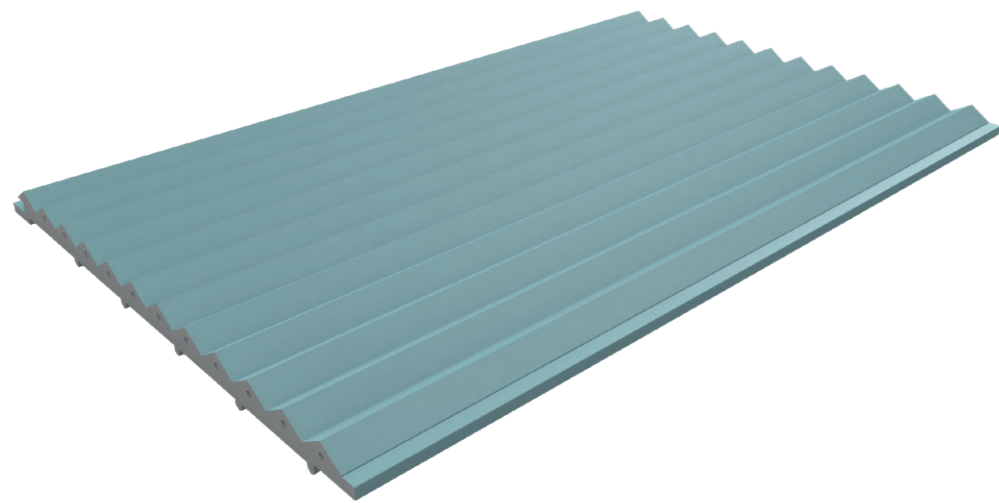
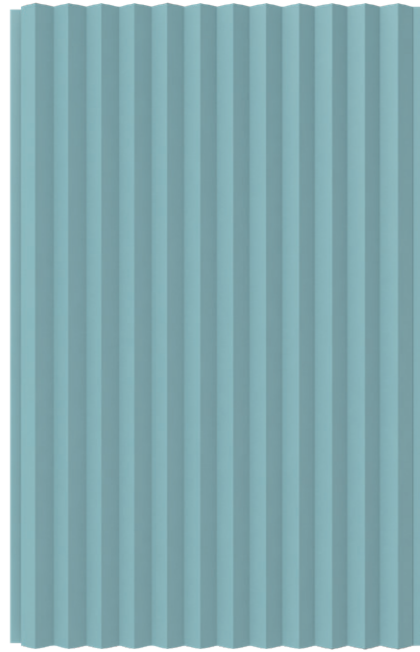
- MVG1516 -  
MODEL W | L I N E N



- MVG1517 -  
MODEL W | WATERMELON

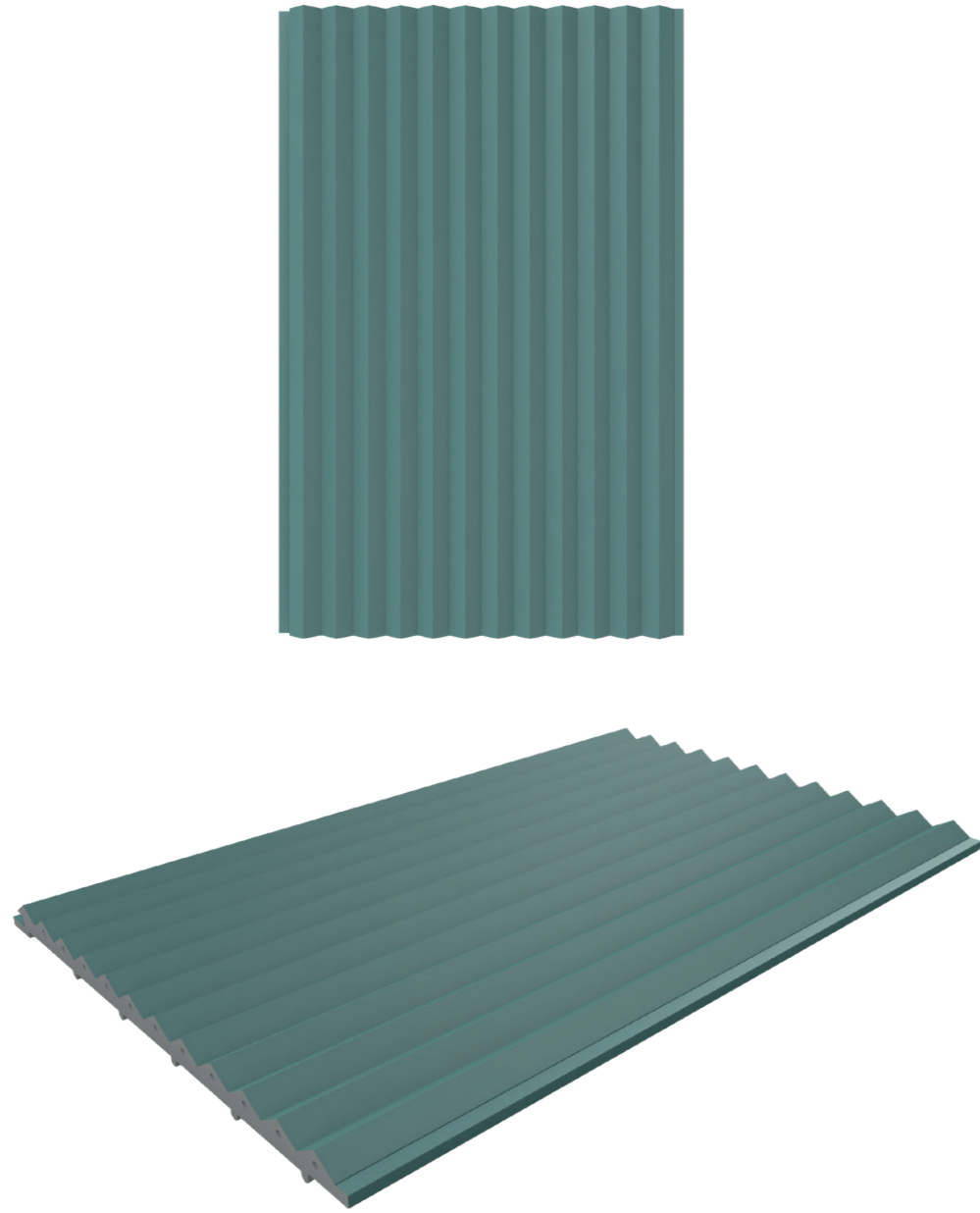


- MVG1518 -  
MODEL W | S K Y



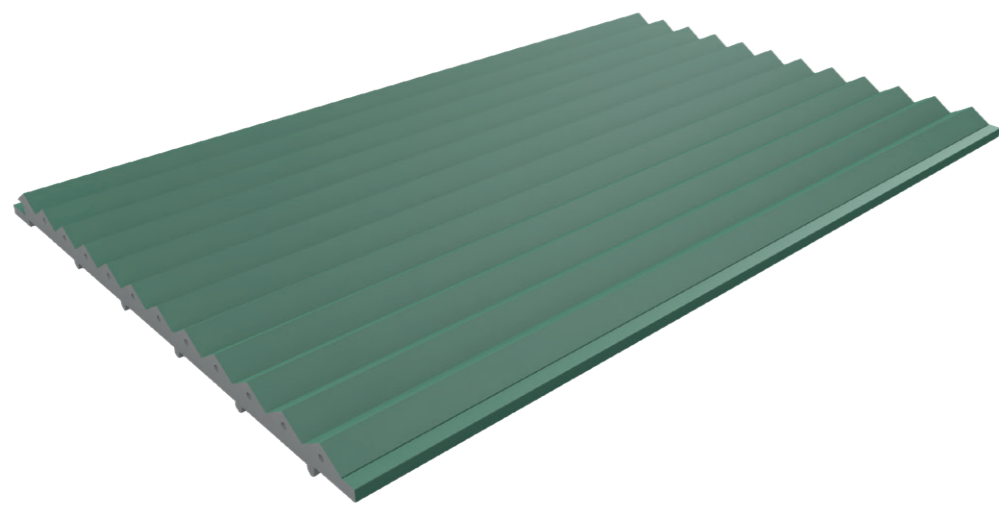
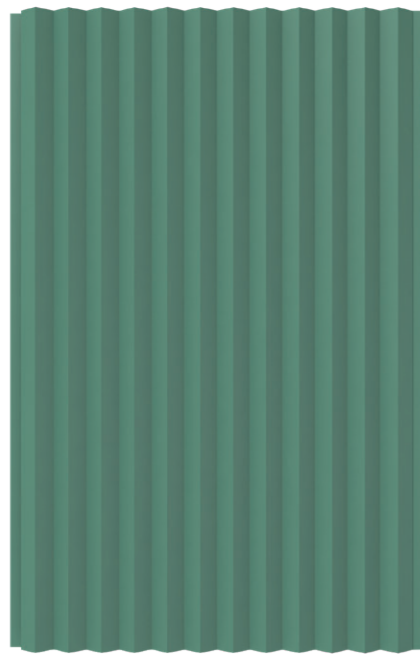
MODEL W

- MVG1519 -  
MODEL W | S A P P H I R E



 MODEL W

- MVG1520 -  
MODEL W | A M A Z O N G R E E N



- MVG1521 -  
MODEL W | CINNAMON



- MVG1522 -  
MODEL W | S H A D O W

