

lush.

SIZE | 160mm x 15mm x 2900mm

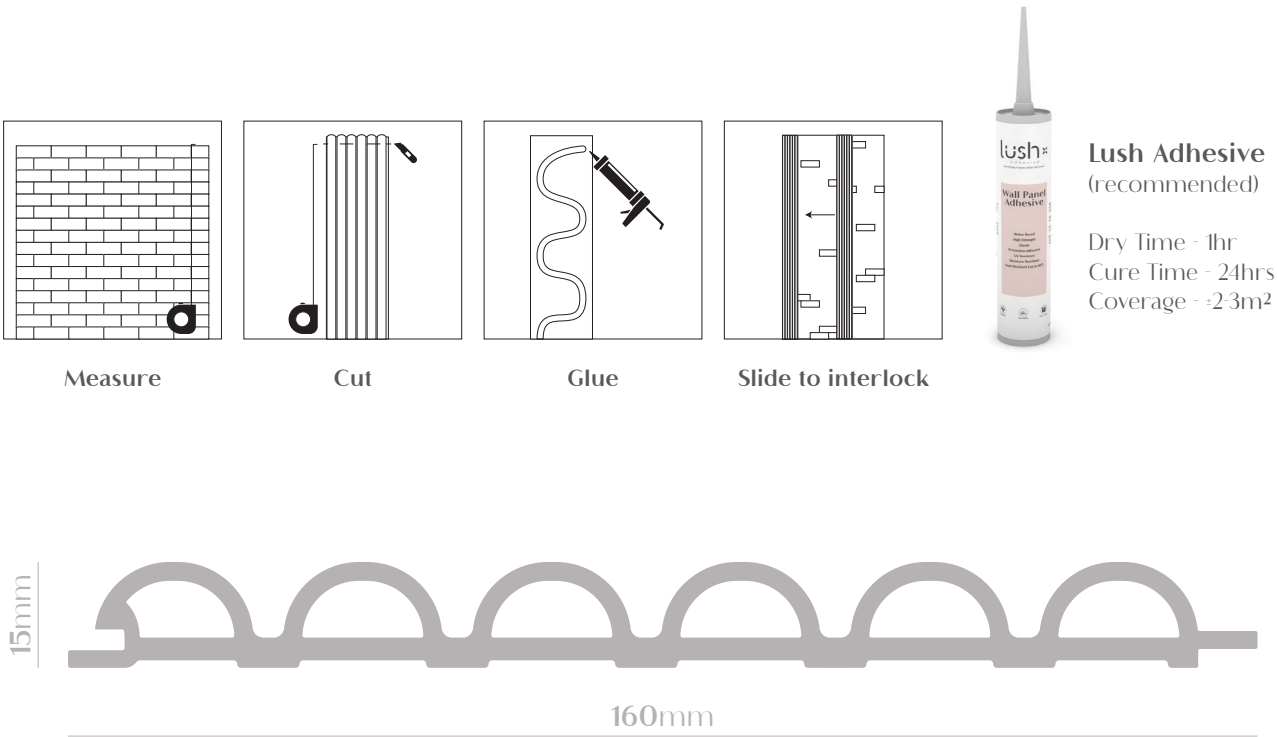
BENEFITS

- Seamless interlocking design
- Termite proof
- Fire resistant
- Water resistant
- High Strength
- Eco Friendly
- Low maintainance
- Easy installation (interlocking)
- Highest quality for indoor wall use
- Material - Wood Plastic Composite
- Surface - Lamination

INSTALLATION

1. Ensure that the application surface is dust and grime free and any wallpaper is removed.
2. Measure the application area and cut the panels to size using a blade or circular saw.
3. Apply the recommended Lush Adhesive in an even layer to the back of the panel.
4. Press the panel firmly against the wall (can also be secured using a nail gun).
5. Panels can be installed horizontally or vertically
6. Combine two grooved edges for corner finish.
7. Allow to dry.

NB! KEEP OUT OF DIRECT SUNLIGHT. KEEP IN AREAS BELOW 30 DEGREES CELSIUS.



MODEL D



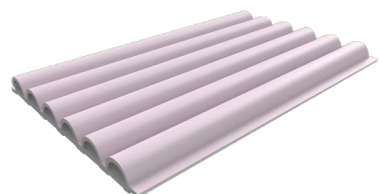
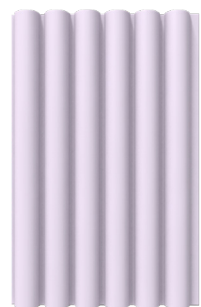
MVG1447
MODEL D | *PECAN NUT*



MVG1448
MODEL D | *HAZELNUT*



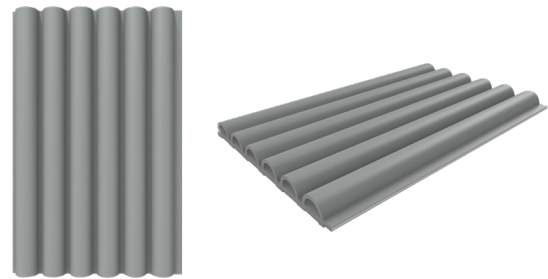
MVG1450
MODEL D | *BLANCO*



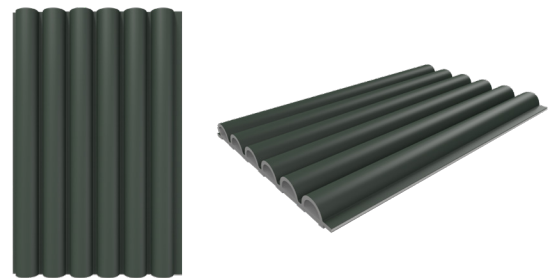
MVG1451
MODEL D | *LEMONADE*



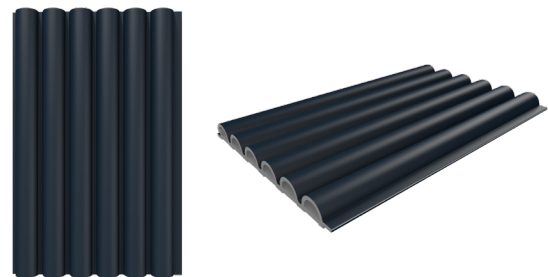
MODEL D



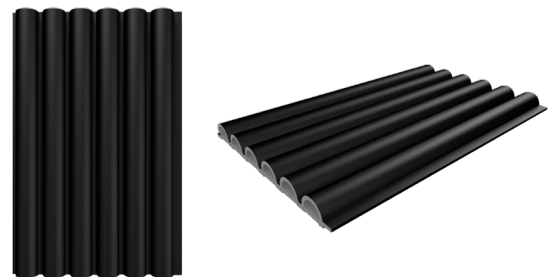
MVG1453
MODEL D | *SLATE*



MVG1455
MODEL D | *FERN*



MVG1456
MODEL D | *MIDNIGHT BLUE*



MVG1457
MODEL D | *NERO*



SIZE | 159mm x 23mm x 2900mm

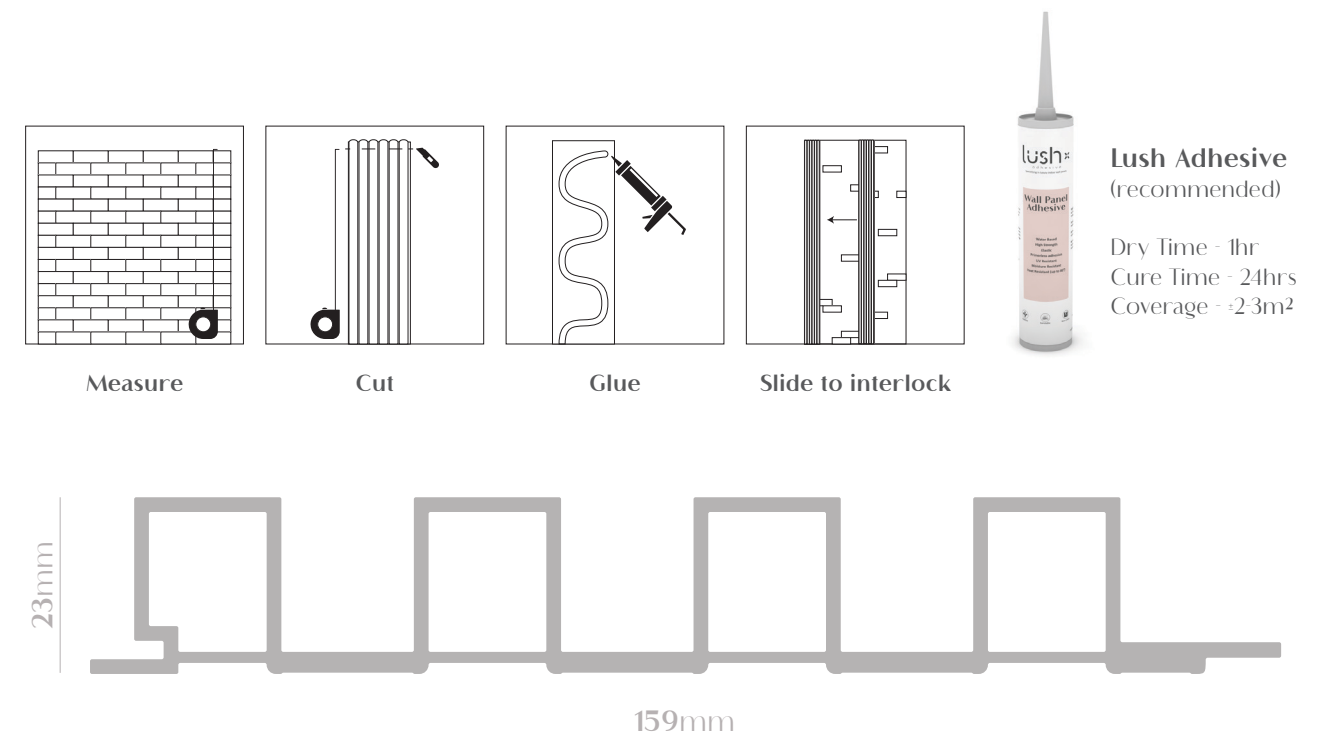
BENEFITS

- Seamless interlocking design
- Termite proof
- Fire resistant
- Water resistant
- High Strength
- Eco Friendly
- Low maintainance
- Easy installation (interlocking)
- Highest quality for indoor wall use
- Material - Wood Plastic Composite
- Surface - Lamination

INSTALLATION

1. Ensure that the application surface is dust and grime free and any wallpaper is removed.
2. Measure the application area and cut the panels to size using a blade or circular saw.
3. Apply the recommended Lush Adhesive in an even layer to the back of the panel.
4. Press the panel firmly against the wall (can also be secured using a nail gun).
5. Panels can be installed horizontally or vertically
6. Combine two grooved edges for corner finish.
7. Allow to dry.

NB! KEEP OUT OF DIRECT SUNLIGHT. KEEP IN AREAS BELOW 30 DEGREES CELSIUS.



MODEL U



MVG1458
MODEL U | *PECAN NUT*



MVG1459
MODEL U | *HAZELNUT*



MVG1460
MODEL U | *COCONUT*



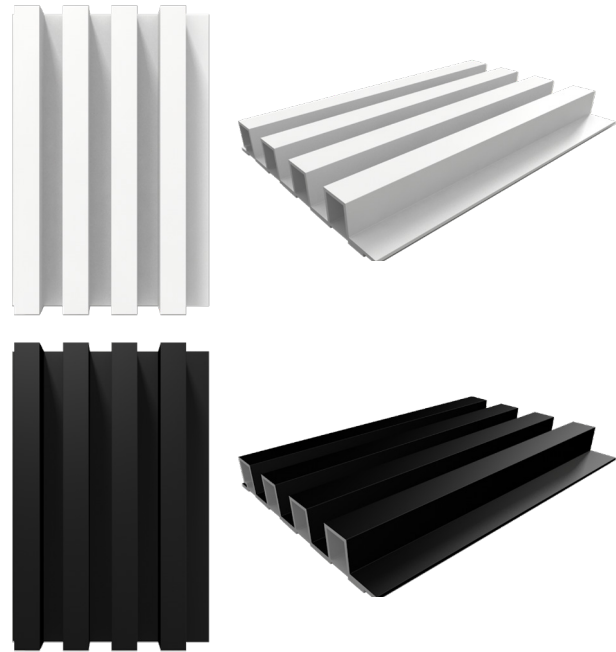
MVG1461
MODEL U | *WALNUT*



MVG1462
MODEL U | *CHESTNUT*



MODEL U



MVG1463
MODEL U | *BLANCO*

MVG1464
MODEL U | *NERO*



SIZE | 155mm x 8mm x 2380mm

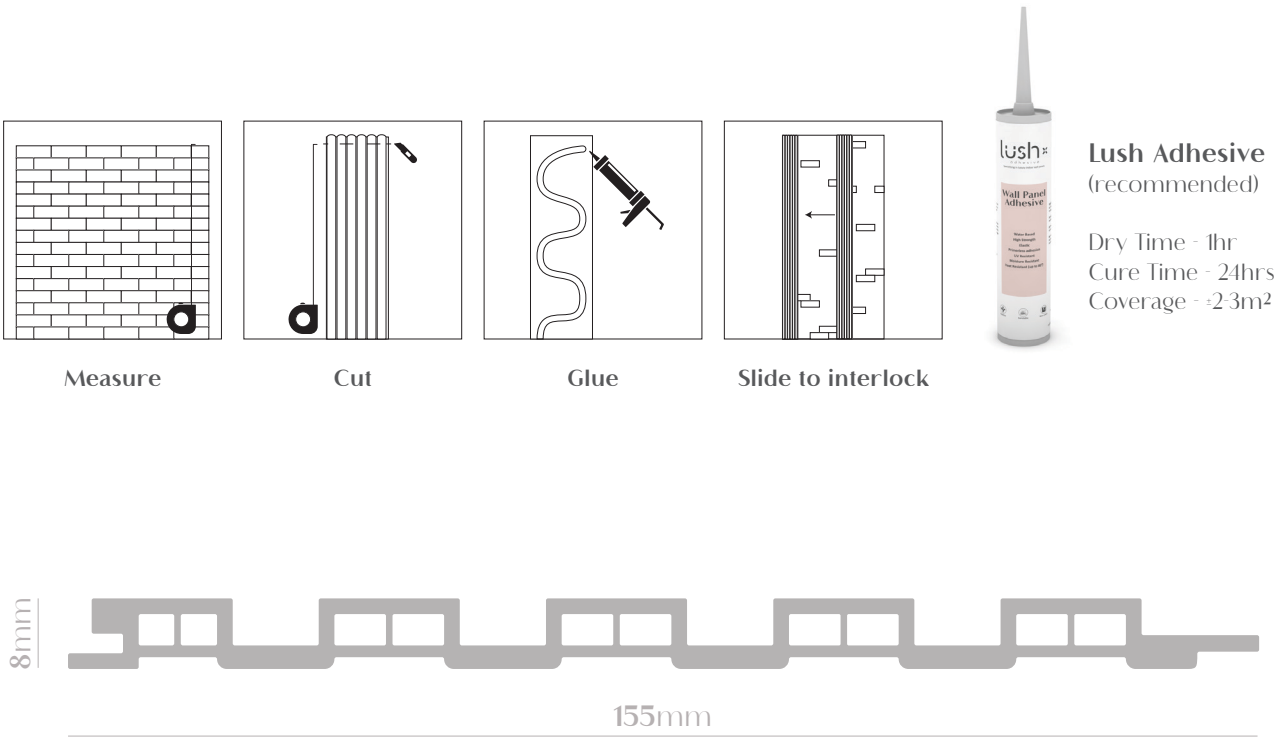
BENEFITS

- Seamless interlocking design
- Termite proof
- Fire resistant
- Water resistant
- High Strength
- Eco Friendly
- Low maintainance
- Easy installation (interlocking)
- Highest quality for indoor wall use
- Material - Wood Plastic Composite
- Surface - Lamination

INSTALLATION

1. Ensure that the application surface is dust and grime free and any wallpaper is removed.
2. Measure the application area and cut the panels to size using a blade or circular saw.
3. Apply the recommended Lush Adhesive in an even layer to the back of the panel.
4. Press the panel firmly against the wall (can also be secured using a nail gun).
5. Panels can be installed horizontally or vertically
6. Combine two grooved edges for corner finish.
7. Allow to dry.

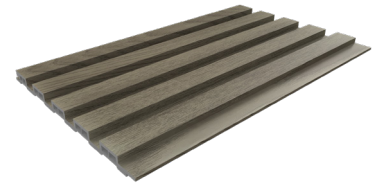
NB! KEEP OUT OF DIRECT SUNLIGHT. KEEP IN AREAS BELOW 30 DEGREES CELSIUS.



MODEL H



MVG1507
MODEL H | *PINE*



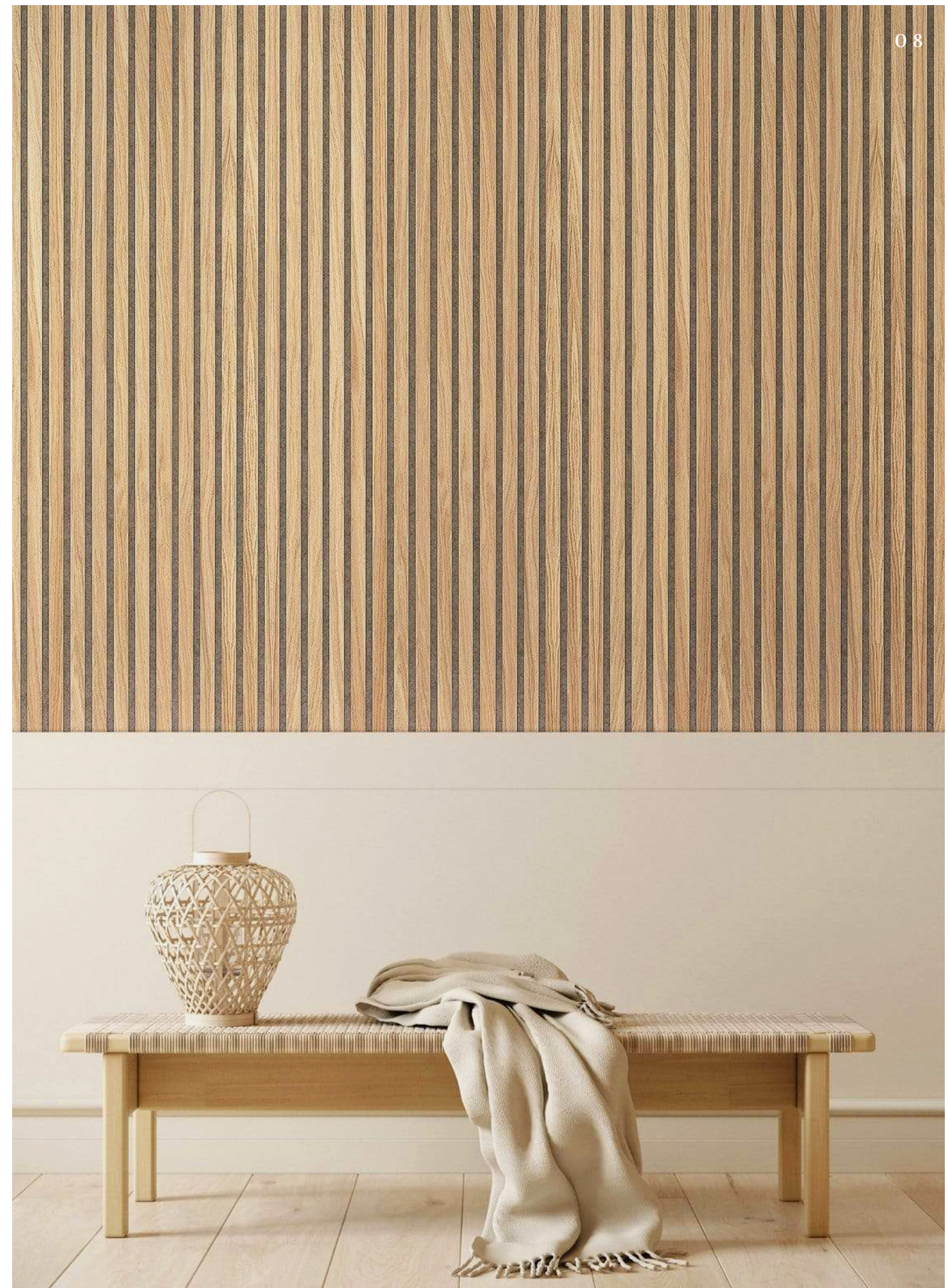
MVG1508
MODEL H | *BIRCH*



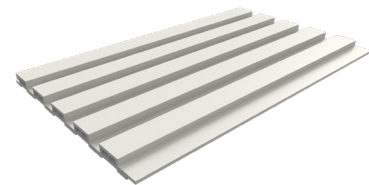
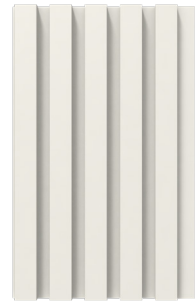
MVG1509
MODEL H | *HICKORY*



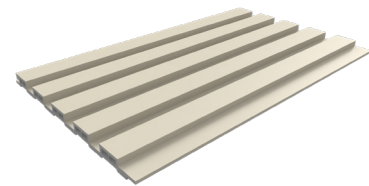
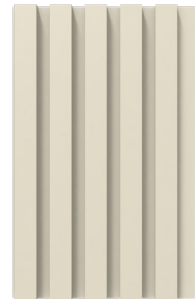
MVG1510
MODEL H | *WENGUE*



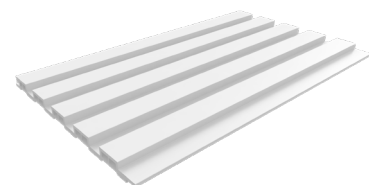
MODEL H



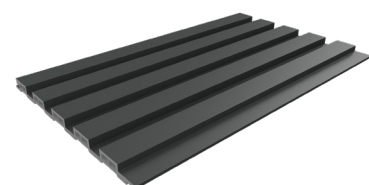
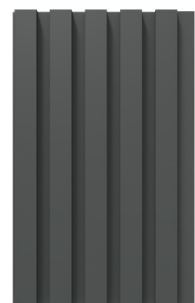
MVG1511
MODEL H | *IVORY*



MVG1512
MODEL H | *EGGSHELL*



MVG1513
MODEL H | *PEWTER*



MVG1514
MODEL H | *SHADOW*



SIZE | 160mm x 11mm x 2900mm

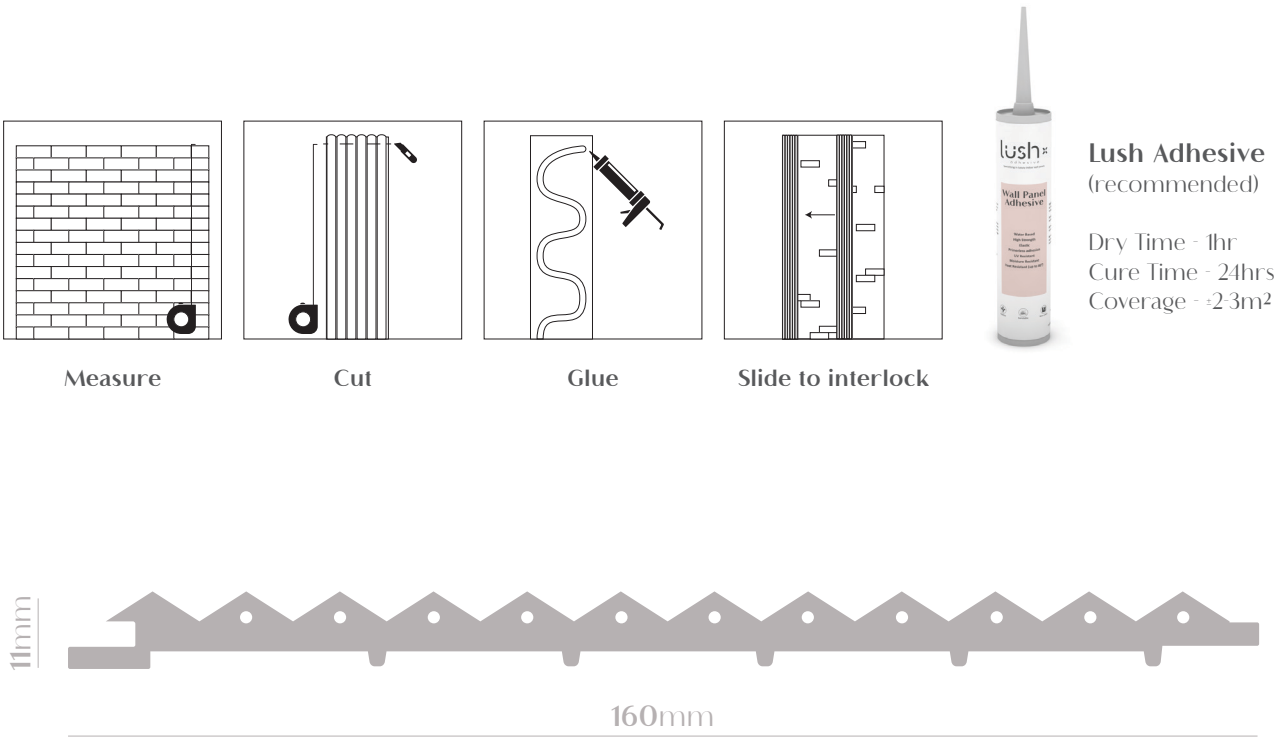
BENEFITS

- Seamless interlocking design
- Termite proof
- Fire resistant
- Water resistant
- High Strength
- Eco Friendly
- Low maintainance
- Easy installation (interlocking)
- Highest quality for indoor wall use
- Material - Wood Plastic Composite
- Surface - Lamination

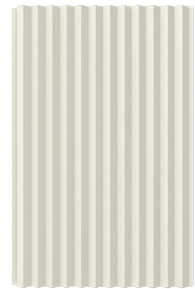
INSTALLATION

1. Ensure that the application surface is dust and grime free and any wallpaper is removed.
2. Measure the application area and cut the panels to size using a blade or circular saw.
3. Apply the recommended Lush Adhesive in an even layer to the back of the panel.
4. Press the panel firmly against the wall (can also be secured using a nail gun).
5. Panels can be installed horizontally or vertically
6. Combine two grooved edges for corner finish.
7. Allow to dry.

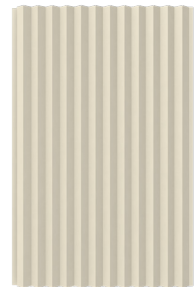
NB! KEEP OUT OF DIRECT SUNLIGHT. KEEP IN AREAS BELOW 30 DEGREES CELSIUS.



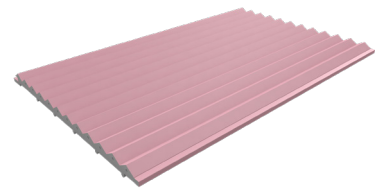
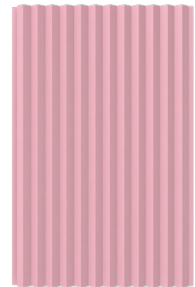
MODEL W



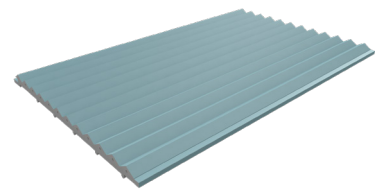
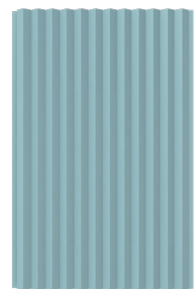
MVG1515
MODEL W | *WARM WHITE*



MVG1516
MODEL W | *LINEN*



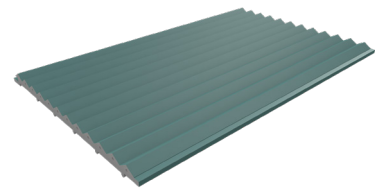
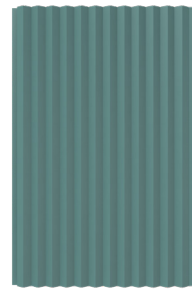
MVG1517
MODEL W | *WATERMELON*



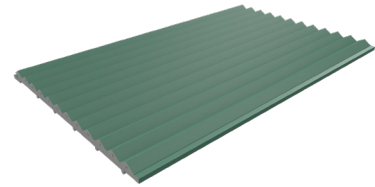
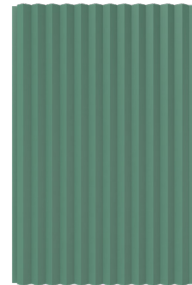
MVG1518
MODEL W | *SKY*



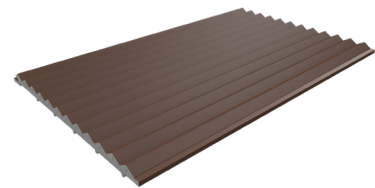
MODEL W



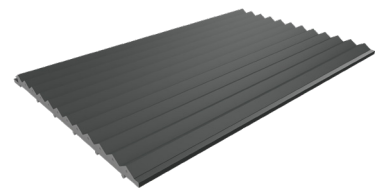
MVG1519
MODEL W | *SAPPHIRE*



MVG1520
MODEL W | *AMAZON GREEN*



MVG1521
MODEL W | *CINNAMON*



MVG1522
MODEL W | *SHADOW*

